



# AFRICAPOLIS

Urbanization Trends 1950-2020:

A Geo-statistical Approach

**West Africa**



# ***EXECUTIVE SUMMARY***

# CONTENTS

<b>EXECUTIVE SUMMARY .....</b>	<b>2</b>
<b>SOME IMPORTANT RESULTS OF THE STUDY.....</b>	<b>4</b>
<b>MAIN STATISTICAL INDICATORS .....</b>	<b>10</b>
<b>THE 16 COUNTRIES OF WEST AFRICA .....</b>	<b>10</b>
NOTE.....	11
The Indicators.....	12
▪ Main statistical indicators for all of West Africa (16 countries).....	13
Main Statistical Indicators for Benin.....	13
Main Statistical Indicators for Burkina Faso .....	14
Main Statistical Indicators for Cape Verde .....	16
Main Statistical Indicators for Côte d'Ivoire .....	17
Main Statistical Indicators for Ghana.....	18
Main Statistical Indicators for The Gambia.....	19
Main Statistical Indicators for Guinea.....	20
Main Statistical Indicators for Guinea Bissau.....	21
Main Statistical Indicators for Liberia .....	22
Main Statistical Indicators for Mali .....	23
Main Statistical Indicators for Mauritania .....	24
Main Statistical Indicators for Niger .....	25
Main Statistical Indicators for Nigeria.....	26
Main Statistical Indicators for Senegal.....	27
Main Statistical Indicators for Sierra Leone.....	28
Main Statistical Indicators for Togo .....	29

## **SOME IMPORTANT RESULTS OF THE STUDY**

Following a detailed survey in which the evolution of more than 2,500 agglomerations in the 16 countries of West Africa was reconstructed case by case, it is apparent that there were 124 agglomerations of more than 10,000 inhabitants in West Africa in 1950 and 1,038 in 2000. This number should exceed 1,500 by 2020.

In parallel, the national metropolitan areas have consolidated their primacy<sup>1</sup> over the urban systems they control to the detriment of secondary cities and towns without increasing their share of the urban population. Indeed, the metropolitan areas' share of the overall population remained stable until 2000 (less than 40%) and should decrease to 35% by 2020. This has not prevented primacy from becoming entrenched: the ratio between the size of the largest agglomeration and the second largest has gone from an average of 2.8 to 6.3. Even if, as predicted, this ratio falls to 5.7 by 2020, this high level illustrates the relative decline of large secondary agglomerations.

Thus, two trends are characteristic of the entire period:

**(a) The proliferation of new, smaller agglomerations that cross the urban threshold each year.** These results are no doubt linked to the selected threshold, but from a structural point of view, the process is not dependent on the choice of threshold.

**(b) The very marked confirmation of the primacy of metropolitan areas** for almost all the present or former national capitals (Abidjan, Lagos, etc.).

The result of (a) + (b) explains the slow dynamics of secondary cities.

---

<sup>1</sup> This indicator is calculated by dividing the size of the population of the first-ranked agglomeration by that of the second-ranked agglomeration.

An increasing contrast can thus be observed between the strong growth of the largest agglomerations, which are located at the interface between the global and the local economy, and the more or less controlled spread of urbanization in the form of new small agglomerations reaching the urban threshold, but whose “urban” status is not always recognized politically and/or statistically. Hence, the dichotomy between “**metropolization from above,**” i.e., the spread of urbanization through the large cities that are entry points for the globalization of territories, and “**urbanization from below,**” the result of a gradual reduction in rural exodus in the context of strong demographic pressures. The latter trend raises the issue of the identification and recognition of this stratum of agglomerations and their populations in the development process. This dichotomy became clear in 1990 and has been consistently confirmed since, and it will likely deepen further if ignored by the development actors.

This divergent dynamics is the main result of the study. Importantly, this outcome has only come to light because the *Africapolis* database is founded on data disaggregated at the agglomeration level

Thus, while the existing international reference databases reveal the highs of urban hierarchies (cities with more than 100,000 inhabitants for the *UN Demographic Yearbook*), *Africapolis* uncover also the lows, providing a new opportunity to **observe all aspects of the urban distributions on a case by case basis.** From this point of view, while the study does not challenge the documentary sources of international organizations, the change in the scale of analysis it uses enables urban trends to be analyzed anew.

As regards the overall total, the urban population of West Africa went from 4.6 million to 72 million between 1950 and 2000, and it is expected to reach 123 million by 2020. Despite this large increase, **the urbanization rate remains the lowest in the world,** lower than for East Africa and the Indian subcontinent. The rate for West Africa was 7.5% in 1950, 32% in 2000, and should surpass 35% by 2020.

Based on the built-up areas as documented for the period 2002-2007, **the total urbanized area in West Africa has reached 14,000 km<sup>2</sup>**. This translates to an average urban density of 7,500 inhabitants/km<sup>2</sup>, when the average density in the rural areas was 32 inhabitants/km<sup>2</sup> (58, if the Sahara desert is excluded). Naturally, these densities vary according to the size of the agglomerations (the largest being the densest) and natural environments. West Africa is thus far behind the extreme densities registered in Egypt and South Asia (20,000 to 30,000 inhabitants/km<sup>2</sup>), but ahead of Europe and North America (1,000 to 3,000 inhabitants/km<sup>2</sup>).

In total, the urbanized areas **represent 0.24% of the total land area of West Africa (0.4% if the uninhabited areas of the Sahel are excluded)**. Contrary to the widespread view of “agglomerations devouring agricultural land,” these data show that the city is the most efficient form of occupancy devised by man to house the maximum population within the minimum area. Nevertheless, a question arises regarding the actual location of these agglomerations because they are distributed in cross-regionally very diverse ways.

**There are 23.5 million inhabitants in the coastal cities of West Africa, the historical points of entry for the colonization of the continental interior, i.e., 38% of the urban population in 2005 as opposed to 1.3 million in 1950 (28%).** A notable feature of this urban sub-network is that it is highly concentrated in only 72 agglomerations (or 7% of the spread). Moreover, this sub-network cuts widely across national metropolitan areas. Yet it remains difficult to speak of “coastalization” of the population as these agglomerations are poorly integrated because of the area’s political fragmentation. A lone exception is the Sekondi-Accra-Lomé-Cotonou-Lagos sector.

The only truly navigable water network, the Niger is also one of the rare natural features to structure the population’s geographical distribution, with 2.9 million inhabitants in 2000 and more than 4.6 million predicted by 2020, mainly as a result of the growth of the two capitals it feeds: Bamako and Niamey. Yet a few large urban districts have managed to develop beyond the coasts and rivers: the Ouagadougou, Kano, and Kumasi areas, and the Yoruba area.

## **THE REPORT**

The present study updates our knowledge on the state of urbanization in West Africa, its evolution and perspectives, using a geostatistical approach that combines demographic surveys and SIG technologies. This approach has been tested in other parts of the world since 1993 with the implementation of the *Geopolis* program.

**The four sections** of the *Africapolis* report present, with statistical data and mapping tools, an analysis of the measure of urbanization. This analysis focuses on the size of cities and towns, their number and hierarchies, and how they are distributed across national territories, so as better to understand how urban networks are created and how they are likely to develop. Thus the *Geopolis* method enables the updating of information by producing a body of morphological and statistical data that is standardized, up-to-date, and diachronic, for each of the 16 countries studied.

### ***The Geopolis Methodology***

An “urban agglomeration,” in the sense of the morphology of land occupancy, is defined as a continuum of build-up areas with no more than 200 meters between separate buildings. Any local administrative unit of more than 10,000 inhabitants is considered urban if the main agglomeration shelters more than half of its population.

In the *Geopolis* approach, agglomerations are identified by a procedure that brings together two kinds of information: statistical data on population and images, including maps with geographical coordinates. The methodology comprises three key stages:

(a) Data from enumerations and population censuses were extracted from a broader database of 160,000 local units. Since the number of inhabitants is susceptible to very rapid change over time, the populations were estimated so that they could be given on standardized dates (July 1, 1950, 1960, 1980, 1990, 2000, 2010, and 2020).

(b) Satellite images of the land area were systematically swept in order to locate all agglomerations with an urban footprint of more than 500 meters in length on the ground. The perimeters were digitalized directly from the satellite images (2001-2008) of these agglomerations.

(a) + (b): The resulting polygons were crossed with the corresponding place names. This part of the analysis proved particularly important because West Africa remains today one of the least advanced regions of the world as regards the mapping of populations.

The present study thus enables this gap to be partially filled through the mapping of close to 1,450 agglomerations of more than 5,000 inhabitants identified in the sub-region on the basis of satellite images, and covering almost 2,700 recorded local units. All of these data are brought together in the *Africapolis* database. As the study included a 2020 perspective, local units with a population between 5,000 and 10,000 inhabitants in 2000 were included in order to locate most of the agglomerations that will likely exceed 10,000 inhabitants by 2020.

It is important to understand that some agglomerations of more than 5,000 inhabitants are made up of several local units with potentially less than 5,000 inhabitants each. In contrast, some local units of more than 5,000 inhabitants do not correspond to any agglomeration on the ground.

**With this in mind, the urban threshold used in the study was set at 10,000 inhabitants**, following the threshold selected in the *Geopolis* database. The indicators and results of the study thus enable useful comparisons with the rest of the world to be made.

## National Urbanization Processes in West Africa

National urbanization processes are at various stages. In less populated, smaller countries such as The Gambia, Guinea Bissau, and Togo, the urban network rests on one metropolis and a few

small cities and towns. In Côte d'Ivoire and especially in Ghana and Nigeria, on the other hand, secondary agglomerations have become hierarchical, and some have become large cities. At this stage of the urban network's formation, rural exodus is drying up. No West African country has reached the stage of urban hierarchy stabilization, for two reasons: the cities are too new, and demographic growth equilibrium has not been reached. Thus, the urbanization rate for all 16 countries, which went from 7.5% in 1950 to 31% in 2000, should continue to increase.

This analysis lends itself to a more careful examination of the so-called "urban explosion" in Africa and the urban imbalance due to the hypertrophy of the "megalopolitan" areas. While earlier studies relativized these two propositions within the context of the 1970s, the point here is to re-consider them according to a set of geographical indicators relying on the most recent data and comparable with the rest of the world. For example, the countries of West Africa are in no way exceptional over the issue of primacy.

While the national capitals stand well above their urban hierarchy, their growth receive a new interpretation when analyzed according to the Law of Metropolization<sup>2</sup>, a model verified at global scale. Thus, taking in the example of Togo covered in this report, this law explains why the importance of the metropolis has continued to decrease while the rate of primacy has greatly increased: as the metropolis continues to grow, urban growth now rests more on the multiplication of agglomerations than on the increased size of secondary cities and towns. The Law of Metropolization was verified for each of the 16 countries covered in the study, and the results are presented in tabular form in Part 2 of the summary.

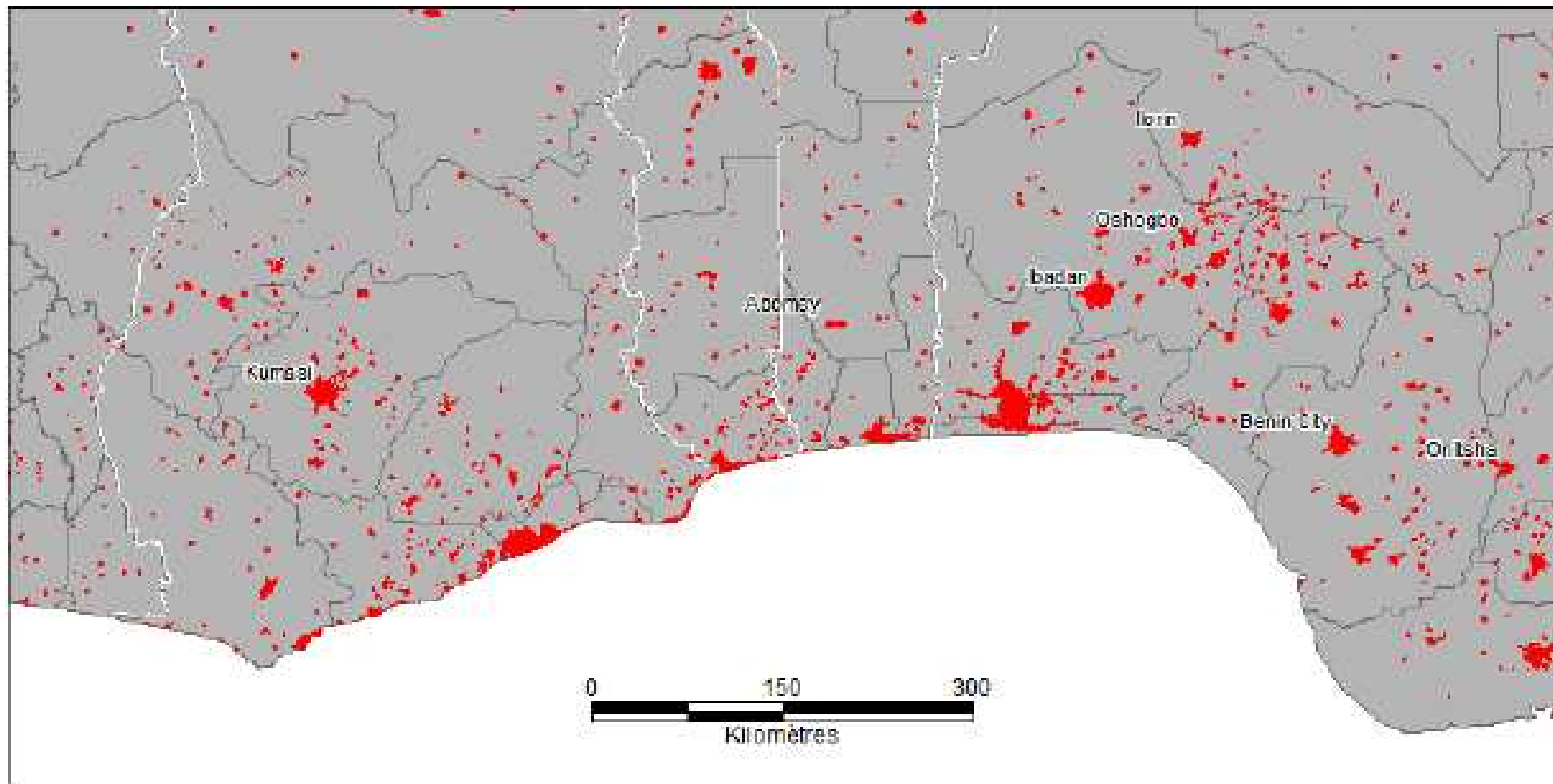
---

<sup>2</sup> The Law of Metropolization holds that the size of metropolitan areas varies according to the total urban population following the formula:

$P_m = 6.55 \cdot P_u^{0.815}$ , where  $P_m$  represents the total metropolitan population and  $P_u$  the total urban population. The "theoretical" metropolitan population obtained through this mathematical formulation is thus then confronted to the number found in population statistics.

[http://cyberato.pu-pm.univ-fcomte.fr/collgeo/files/8\\_GeoPonts\\_Moriconi.pdf](http://cyberato.pu-pm.univ-fcomte.fr/collgeo/files/8_GeoPonts_Moriconi.pdf)

## Physical Extent of Agglomerations of More than 5,000 Inhabitants in 2005



Source: *Africapolis*,  
2008

The cities and towns of West Africa are recent. Today, the colonial urban network is hardly visible because the number of agglomerations of more than 10,000 inhabitants will have multiplied by eight between 1950 and 2020. The cities and towns have become larger: there was no city with more than 1 million inhabitants until 1960 whereas there will be 19 by 2020. Two agglomerations, Lagos and Abidjan, have a population of more than 3 million inhabitants each. Yet nearly two thirds of agglomerations of more than 10,000 inhabitants have fewer than 50,000 inhabitants. Among these, the secondary urban centers that serve as administrative seats at local or regional level were home to 20% of the West African population in 2000.

In this regard, a chapter of this report records the links – observed in the rest of the world – between how agglomerations are distributed and how territorial partitioning is structured. The impact of administrative partitioning on the formation of cities and towns is difficult to measure in the countries of West Africa, where there have been frequent territorial reorganizations. Yet it is perceptible via colonial legal traditions, which have enshrined the principles behind that division. For example, it has had long term influence on primacy, which is higher in the former French colonies. In fact, the manipulation of territorial partitioning can be a strategy – sometimes leading to the opposite of the desired effect – for influencing the hierarchy of urban networks either by promoting the multiplication of small agglomerations or by protecting the fabric of existing ones.

### **The new agglomerations**

This study documents the growth and relative importance of new agglomerations, which are phenomena observed on the ground and underlined by a number of studies, but which have been measured only very partially so far at the sub-continental level. Indeed, most databases (including that of the UN) only list cities of more than 100,000 inhabitants. Yet there are few of these in West Africa: 104 in 2000, or only one tenth of all the agglomerations documented in the *Africapolis* database.

Small towns have emerged in three kinds of geographical environments: rural areas, the periphery of large cities, and along major highways. The report describes the conditions of their development. The first form of urbanization – called *in-situ* urbanization – has been the focus of attention among researchers and development organizations for about 15 years because it calls into question the nature of the transformation of areas classified as “rural” and therefore “agricultural”. In West Africa, *in-situ* urbanization was accelerated through the combined effects of a high natural population growth rate (2.8%) and a low hierarchy in the population distribution at the beginning of the reference period. In the 1950-1960s, most national urban networks in West Africa were limited to one metropolis and a few small cities and towns; the number of entry points for prospective migrants was therefore limited. The *in-situ* urbanization process is optimized within a configuration combining high population densities and concentrated settlements. Unlike India or Egypt, West Africa shows an overall configuration that combines high densities and dispersed settlements.

However, the population can spread itself over the territory in many ways. Thus the maps and satellite images show a wide diversity of population patterns not only at the regional level but often at the national level over small distances. A number of images and figures in the report show dense areas of villages in Burkina Faso next to areas loosely settled with large villages. To the south of Enugu in Nigeria, by contrast, images reveal a configuration consisting of grouped settlements and densely populated areas. Thus the average size of agglomerations arising out of *in-situ* urbanization is variable: generally small in the Sahel and savanna areas, but large in the south of Togo and Benin, the center of Burkina, and the Yoruba region.

The morphological approach to agglomerations and the inclusion of inhabited areas up to a threshold of 5,000 inhabitants have also made it possible to describe a phenomenon that often escapes the official definition of “urban,” that is, the axialization of urban networks, as chains of small towns growing along major highways. In West Africa, this kind of settlement has a special configuration:

because of the low density of transport networks, the obsolescence of freight railroads, and the fact that African coastlines are not transportation axes (except between south of Dakar and Mbour and from Sekondi-Takoradi to Lagos), the axialization tends to concentrate along major highways such as the Dakar-Touba, Abidjan-Bouake, Accra-Koumassi, Lome-Kara, Cotonou/Porto Novo-Abomey, and Lagos-Ibadan corridors. The study describes the case of Senegal, where the population living in agglomerations located less than 5 km from the main highway network increased almost tenfold between 1950 and 2000.

The presence of these new urban areas – in contrast to the two other kinds of urbanization represented by the densification and expansion of built-up areas – sheds a new light on the effects of internal migrations on urbanization, particularly because it leads to dissociating the two trends. Indeed, the new agglomerations are growing partly because of the absence of rural exodus or even of reversed migratory flows.

### **The morphological study of Nigeria's cities and towns**

The final section of this report explains how the Africapolis morphological approach of Nigeria's cities and towns leads to relativize the urban data published in national population censuses. In order to complete fragmentary or disputed demographic information, the footprint of agglomerations as they existed in 1963 was systematically compared to recent satellite images. Available population data were then compared to the 2006 population figures or the 1963-2006 population growth with the cities' densities calculated from the built-up areas, then corrected when needed. The report provides some ten examples, with supporting illustrations. A total of 1,032 agglomerations were identified, and the database is probably exhaustive as regards agglomerations of more than 10,000 inhabitants.

The results obtained suggest a downward revision for Nigeria's urbanization rate, from 40% to 30%. The report explains in detail

how this revised rate can be compared with that provided by the UN. This revision enables a more realistic comparison of urbanization within West Africa. In 2020, 40% of agglomerations of more than 10,000 inhabitants will be in Nigeria whereas in 1950, they made up 60% of the total amount. This shows, among other things, the increasing importance of new agglomerations of more than 10,000 inhabitants in the rest of the region. The largest city in West Africa remains Lagos, but a number of large Nigerian cities have been declassified in favor of the national metropolitan areas of other countries, which registered growth rates higher than, for example, that of the older Yoruba urban network.

### **The Atlas of West Africa**

One section of the report takes the form of an Atlas, bringing together, in addition to a mapping of demographic indicators, several groups of thematic maps including city and town centers, distances from the coast, distances between agglomerations, and comparisons between rural and urban densities. Looking at densities, for example, the mapping of agglomerations' morphology provides insight into certain aspects of the complex and irregular relationships between urban and rural trends in West Africa. In 2000, the density of agglomerations of more than 10,000 inhabitants was statistically independent from the densities in rural areas, and therefore seems to have been linked primarily to regional urban rationales at work.

### **The report is divided into four sections:**

- Part 1 sets out the documentary sources and the methodology;
- Part 2 presents an analysis of the urbanization process;
- Part 3 consists of an Atlas of maps;
- Part 4 consists of 16 country fact-sheets

***MAIN STATISTICAL INDICATORS***

***THE 16 COUNTRIES OF WEST AFRICA***

## Note

The figures in this report were calculated using the *Africapolis* database.

The degree of **precision** in the figures and percentages in no way implies a corresponding margin of error.

The **data presented by agglomeration** will be available online at [www.e-Geopolis.eu](http://www.e-Geopolis.eu) in the fall of 2008 and comparison with other areas of the world will be possible by late 2009.

All of the figures **are susceptible to change** in details as improvements are continuously made to the *Geopolis* database through updates from the latest censuses, digitalization of old censuses, clarification of the map coverage, etc.

Users should therefore **quote the source along with its date**: *Geopolis*, 2008.

The homogeneous methodology used in the study ensures **rigorous compatibility** between statistical indicators in time and space. However, the indicators presented in the report may **vary significantly from the indicators published by the official statistical services** of each country.

# The Indicators

- Total Population
- Number of *Geopolis* agglomerations (see methodology in Part 1 of this report)
  - From 10,000 to 19,999 inhabitants
  - From 20,000 to 49,999 inhabitants
  - From 50,000 to 99,999 inhabitants
  - From 100,000 to 199,999 inhabitants
  - From 200,000 to 499,999 inhabitants
  - From 500,000 to 999,999 inhabitants
  - 1 million and above
- Population of agglomerations, by size of agglomeration
- *Geopolis* urbanization rate (%): population of *Geopolis* agglomerations divided by total population
- Primacy index: population of first-ranked agglomeration divided by population of second-ranked agglomeration
- Predicted metropolitan population; see definition of the Law of Metropolization on Page 9 above and the analysis in Chapter 3 of Part 2 of this report.
  - Observed metropolitan population
- Rate of national metropolization: metropolitan population divided by total population
- Rate of urban metropolization: metropolitan population divided by total urban population
- Population of secondary agglomerations
- Rate of secondary urbanization: population of secondary agglomerations divided by total urban population

## Main statistical indicators for all of West Africa (16 countries)

	1950	1960	1970	1980	1990	2000	2010	2020
Total Population	61,323,228	77,507,665	100,142,173	133,504,066	177,350,354	232,485,711	294,835,238	358,430,762
Number of <i>Geopolis</i> agglomerations	125	224	375	551	764	1,019	1,281	1,500
From 10,000 to 19,999	61	112	193	290	394	510	632	710
From 20,000 to 49,999	45	64	116	156	222	305	393	469
From 50,000 to 99,999	14	30	28	55	74	100	135	163
From 100,000 to 199,999	2	12	24	22	34	50	60	78
From 200,000 to 499,999	2	4	8	21	24	31	29	43
From 500,000 to 999,999	1	2	5	1	10	12	16	16
1 million and above	0	0	1	6	6	11	16	21
Population of agglomerations	4,613,250	9,998,640	19,055,554	31,857,038	50,790,437	74,015,198	98,957,387	123,928,203
From 10,000 to 19,999	839,724	1,599,024	2,624,008	4,018,026	5,457,584	7,124,522	8,822,629	9,990,998
From 20,000 to 49,999	1,439,718	1,894,649	3,600,503	4,790,137	6,830,046	9,143,902	12,043,716	14,319,342
From 50,000 to 99,999	991,108	2,083,871	2,065,350	3,796,752	5,087,735	6,829,488	9,628,716	11,183,806
From 100,000 to 199,999	277,513	1,575,738	3,372,509	3,244,329	4,654,148	6,520,657	8,766,136	10,543,892
From 200,000 to 499,999	543,845	1,457,005	2,180,886	6,483,347	7,331,765	9,710,311	9,256,670	12,589,646
From 500,000 to 999,999	521,342	1,388,353	3,946,283	668,714	6,591,453	8,613,553	10,652,614	10,948,202
1 million and above	0	0	1,266,015	8,855,733	14,837,706	26,072,765	39,786,906	54,352,317
<i>Geopolis</i> urbanization rate (%)	7.5	12.9	19.0	23.9	28.6	31.8	33.6	34.6
Primacy index	1.79	1.11	1.27	2.05	2.80	2.56	2.43	2.36
Predicted metropolitan population	1,767,694	3,320,421	5,616,411	8,537,952	12,486,870	16,972,188	21,504,611	25,833,008
Observed metropolitan population (total of national metropolitan areas)	1,857,197	3,684,464	7,198,716	12,821,485	21,229,515	29,690,354	38,604,650	47,357,828
Metropolization rate (%)	3.0	4.8	7.2	9.6	12.0	12.8	13.1	13.2
Urban metropolization rate (%)	40.3	36.8	37.8	40.2	41.8	40.1	39.0	38.2
Population of secondary agglomerations	2,756,053	6,314,176	11,856,838	19,035,553	29,560,922	44,324,844	60,352,737	76,570,375
Secondary urbanization rate (%)	59.7	63.2	62.2	59.8	58.2	59.9	61.0	61.8

## Main Statistical Indicators for Benin

	1950	1960	1970	1980	1990	2000	2010
Total Population	1,523,800.00	1,876,500.00	2,535,000.00	3,431,756.00	4,628,345.00	6,410,314.00	8,873,360.00
Number of <i>Geopolis</i> agglomerations	5	5	14	39	52	69	83
From 10,000 to 19,999	3	2	11	32	37	34	26
From 20,000 to 49,999	2	1	1	4	12	29	49
From 50,000 to 99,999	0	2	1	1	1	3	5
From 100,000 to 199,999	0	0	1	1	1	1	0
From 200,000 to 499,999	0	0	0	1	0	1	2
From 500,000 to 999,999	0	0	0	0	1	1	0
1 million and above	0	0	0	0	0	0	1
Population of agglomerations	89,061	202,535	421,307	1,119,618	1,787,635	2,757,066	4,024,988
From 10,000 to 19,999	38,961	29,535	146,446	406,333	526,234	512,628	379,930
From 20,000 to 49,999	50,100	23,000	21,022	105,508	360,728	770,865	1,508,021
From 50,000 to 99,999	0	150,000	91,673	64,156	97,128	184,284	357,930
From 100,000 to 199,999	0	0	162,166	148,178	188,926	140,707	0
From 200,000 to 499,999	0	0	0	395,443	0	237,263	519,474
From 500,000 to 999,999	0	0	0	0	614,619	911,319	0
1 million and above	0	0	0	0	0	0	1,259,633
<i>Geopolis</i> urbanization rate (%)	5.8	10.8	16.6	32.6	38.6	43.0	45.4
Primacy index	1.39	1.31	1.77	2.67	3.25	3.84	4.01
Predicted metropolitan population	70,833	138,369	251,356	557,485	816,298	1,161,999	1,581,701
Observed metropolitan population, of which	50,100	150,000	253,839	543,621	803,545	1,148,582	1,573,905
Porto Novo	29,100	65,000	91,673	148,178	188,926	237,263	314,272
Cotonou	21,000	85,000	162,166	395,443	614,619	911,319	1,259,633
National metropolitanization rate	3.3	8.0	10.0	15.8	17.4	17.9	17.7
Urban metropolitanization rate	56.3	74.1	60.3	48.6	45.0	41.7	39.1
Population of secondary agglomerations	38,961	52,535	167,468	575,997	984,090	1,608,484	2,451,083
Secondary urbanization rate	43.7	25.9	39.7	51.4	55.0	58.3	60.9

## Main Statistical Indicators for Burkina Faso

	1950	1960	1970	1980	1990	2000	2010	2020
Total Population	3,154,945	3,671,735	4,861,904	6,559,243	9,061,016	11,390,279	14,904,473	18,418,670
Number of <i>Geopolis</i> agglomerations	3	4	8	18	36	58	87	95
From 10,000 to 19,999	1	2	5	12	25	35	50	43
From 20,000 to 49,999	2	0	1	4	8	17	28	40
From 50,000 to 99,999	0	2	1	0	1	4	6	8
From 100,000 to 199,999	0	0	1	1	0	0	1	2
From 200,000 to 499,999	0	0	0	1	1	1	1	0
From 500,000 to 999,999	0	0	0	0	1	1	0	1
1 million and above	0	0	0	0	0	0	1	1
Population of agglomerations	81,635	143,242	316,110	718,637	1,482,482	2,501,707	3,886,795	5,123,560
From 10,000 to 19,999	10,315	30,354	71,463	160,237	351,508	527,285	703,847	632,738
From 20,000 to 49,999	71,320	0	31,832	126,811	241,581	461,204	817,509	1,219,330
From 50,000 to 99,999	0	112,888	86,771	0	67,294	257,524	397,802	581,109
From 100,000 to 199,999	0	0	126,044	157,271	0	0	111,545	233,893
From 200,000 to 499,999	0	0	0	274,318	259,261	349,605	479,563	0
From 500,000 to 999,999	0	0	0	0	562,838	906,089	0	609,522
1 million and above	0	0	0	0	0	0	1,376,529	1,846,968
<i>Geopolis</i> urbanization rate (%)	2.6	3.9	6.5	11.0	16.4	22.0	26.1	27.8
Primacy index	1.01	1.14	1.45	1.74	2.17	2.59	2.87	3.03
Predicted metropolitan population	65,981	104,337	198,888	388,416	700,806	1,073,505	1,537,299	1,925,495
Observed metropolitan population, of which	71,320	112,888	212,815	431,589	822,099	1,255,694	1,856,092	2,456,490
Ouagadougou	35,481	60,246	126,044	274,318	562,838	906,089	1,376,529	1,846,968
Bobo Dioulasso	35,839	52,642	86,771	157,271	259,261	349,605	479,563	609,522
National metropolization rate (%)	2.3	3.1	4.4	6.6	9.1	11.0	12.5	13.3
Urban metropolization rate (%)	87.4	78.8	67.3	60.1	55.5	50.2	47.8	47.9
Population of secondary agglomerations	10,315	30,354	103,295	287,048	660,383	1,246,013	2,030,703	2,667,070
Secondary urbanization rate (%)	12.6	21.2	32.7	39.9	44.5	49.8	52.2	52.1

## Main Statistical Indicators for Cape Verde

	1950	1960	1970	1980	1990	2000	2010	2020
Total Population	149,984	199,902	271,292	295,703	355,278	434,812	514,346	593,880
Number of <i>Geopolis</i> agglomerations	1	2	2	2	2	3	6	8
From 10,000 to 19,999	1	2	0	0	0	1	4	5
From 20,000 to 49,999	0	0	2	2	1	0	0	1
From 50,000 to 99,999	0	0	0	0	1	2	1	1
From 100,000 to 199,999	0	0	0	0	0	0	1	1
From 200,000 to 499,999	0	0	0	0	0	0	0	0
From 500,000 to 999,999	0	0	0	0	0	0	0	0
1 million and above	0	0	0	0	0	0	0	0
Population of agglomerations	10,084	31,500	50,291	74,500	108,753	170,947	257,331	342,907
From 10,000 to 19,999	10,084	31,500	0	0	0	13,220	50,630	64,452
From 20,000 to 49,999	0	0	50,291	74,500	47,109	0	0	22,780
From 50,000 to 99,999	0	0	0	0	61,644	157,727	78,831	94,692
From 100,000 to 199,999	0	0	0	0	0	0	127,870	160,983
From 200,000 to 499,999	0	0	0	0	0	0	0	0
From 500,000 to 999,999	0	0	0	0	0	0	0	0
1 million and above	0	0	0	0	0	0	0	0
<i>Geopolis</i> urbanization rate (%)	6.7	15.8	18.5	25.2	30.6	39.3	50.0	57.7
Primacy index	-	1.40	1.34	1.02	1.31	1.50	1.62	1.70
Predicted metropolitan population	12,001	30,364	44,459	61,242	83,357	120,510	168,187	212,525
Observed metropolitan population, of which	10,084	13,100	21,494	37,700	61,644	94,757	127,870	160,983
Pria	10,084	13,100	21,494	37,700	61,644	94,757	127,870	160,983
Mindelo	0	18,400	28,797	36,800	47,109	62,970	78,831	94,692
National metropolitanization rate (%)	6.7	6.6	7.9	12.7	17.4	21.8	24.9	27.1
Urban metropolitanization rate (%)	100.0	41.6	42.7	50.6	56.7	55.4	49.7	46.9
Population of secondary agglomerations	0	18,400	28,797	36,800	47,109	76,190	129,461	181,924
Secondary urbanization rate (%)	0.0	58.4	57.3	49.4	43.3	44.6	50.3	53.1

## Main Statistical Indicators for Côte d'Ivoire

	1950	1960	1970	1980	1990	2000	2010	2020
Total Population	2,675,000	4,092,381	5,293,700	8,041,951	11,537,545	16,326,842	21,116,147	25,905,447
Number of <i>Geopolis</i> agglomerations	4	9	28	53	74	107	157	196
From 10,000 to 19,999	2	7	16	28	30	54	92	102
From 20,000 to 49,999	1	0	10	18	34	36	39	60
From 50,000 to 99,999	1	1	0	5	5	9	17	23
From 100,000 to 199,999	0	0	1	0	3	6	4	5
From 200,000 to 499,999	0	1	0	1	1	1	3	4
From 500,000 to 999,999	0	0	1	0	0	0	1	1
1 million and above	0	0	0	1	1	1	1	1
Population of agglomerations	142,146	397,134	1,232,244	2,758,571	4,719,965	6,956,092	9,523,057	12,115,325
From 10,000 to 19,999	23,830	108,898	215,546	404,644	397,039	751,042	1,282,733	1,378,948
From 20,000 to 49,999	28,893	0	296,233	519,741	1,010,187	1,143,853	1,208,477	1,668,745
From 50,000 to 99,999	89,423	59,321	0	325,056	402,688	555,121	1,092,793	1,562,154
From 100,000 to 199,999	0	0	122,386	0	368,594	872,608	563,920	669,394
From 200,000 to 499,999	0	228,915	0	222,411	359,150	485,969	649,656	1,018,595
From 500,000 to 999,999	0	0	598,079	0	0	0	612,787	739,606
1 million and above	0	0	0	1,286,719	2,182,307	3,147,499	4,112,691	5,077,883
Primacy index	3.09	3.86	4.89	5.79	6.08	6.48	6.71	6.87
<i>Geopolis</i> urbanization rate (%)	5.3	9.7	23.3	34.3	40.9	42.6	45.1	46.8
Predicted metropolitan population	103,686	239,538	602,780	1,162,516	1,800,949	2,470,410	3,191,127	3,882,928
Observed metropolitan population, of which	89,423	228,915	598,079	1,286,719	2,182,307	3,147,499	4,112,691	5,077,883
Abidjan	89,423	228,915	598,079	1,286,719	2,182,307	3,147,499	4,112,691	5,077,883
National metropolization rate (%)	3.3	5.6	11.3	16.0	18.9	19.3	19.5	19.6
Urban metropolization rate (%)	62.9	57.6	48.5	46.6	46.2	45.2	43.2	41.9
Population of secondary agglomerations	52,723	168,219	634,165	1,471,852	2,537,658	3,808,593	5,410,366	7,037,442
Secondary urbanization rate (%)	37.1	42.4	51.5	53.4	53.8	54.8	56.8	58.1

## Main Statistical Indicators for Ghana

	1950	1960	1970	1980	1990	2000	2010	2020
Total Population	4,448,984	6,726,800	8,559,313	11,022,576	14,200,241	18,412,256	22,624,271	26,836,282
Number of <i>Geopolis</i> agglomerations	12	31	45	58	83	118	151	200
From 10,000 to 19,999	6	19	27	34	50	66	84	113
From 20,000 to 49,999	4	9	12	15	24	38	46	57
From 50,000 to 99,999	1	1	3	5	5	7	13	20
From 100,000 to 199,999	1	1	1	2	1	3	4	5
From 200,000 to 499,999	0	1	1	1	1	2	2	3
From 500,000 to 999,999	0	0	1	0	1	0	0	0
1 million and above	0	0	0	1	1	2	2	2
Population of agglomerations	470,154	1,170,994	2,154,383	2,993,404	4,457,228	7,200,783	9,966,009	12,996,774
From 10,000 to 19,999	89,842	255,900	360,806	482,734	692,717	922,766	1,178,033	1,528,899
From 20,000 to 49,999	124,498	289,088	329,211	391,835	750,787	1,168,024	1,455,137	1,733,274
From 50,000 to 99,999	93,413	75,400	211,309	301,633	384,191	456,842	860,961	1,306,073
From 100,000 to 199,999	162,401	184,806	143,982	292,903	159,461	346,333	562,775	684,294
From 200,000 to 499,999	0	365,800	371,648	483,267	221,166	499,790	618,953	970,966
From 500,000 to 999,999	0	0	737,427	0	744,894	0	0	0
1 million and above	0	0	0	1,041,032	1,504,012	3,807,028	5,290,150	6,773,268
<i>Geopolis</i> urbanization rate (%)	10.6	17.4	25.2	27.2	31.4	39.1	44.1	48.4
Primacy index	1.74	1.98	1.98	2.15	2.02	1.95	1.88	1.84
Predicted metropolitan population	274,863	578,247	950,385	1,242,556	1,718,815	2,541,006	3,311,587	4,111,661
Observed metropolitan population, of which	162,401	365,800	737,427	1,041,032	1,504,012	2,515,556	3,452,100	4,388,642
Accra	162,401	365,800	737,427	1,041,032	1,504,012	2,515,556	3,452,100	4,388,642
National metropolitanization rate (%)	3.7	5.4	8.6	9.4	10.6	13.7	15.3	16.4
Urban metropolitanization rate (%)	34.5	31.2	34.2	34.8	33.7	34.9	34.6	33.8
Population of secondary agglomerations	307,753	805,194	1,416,956	1,952,372	2,953,216	4,685,227	6,513,909	8,608,132
Secondary urbanization rate (%)	65.5	68.8	65.8	65.2	66.3	65.1	65.4	66.2

## Main Statistical Indicators for The Gambia

	1950	1960	1970	1980	1990	2000	2010	2020
Total Population	243,202	296,896	435,794	626,272	916,416	1,258,718	1,660,414	2,062,110
Number of <i>Geopolis</i> agglomerations	1	1	2	3	4	7	7	10
From 10,000 to 19,999	0	0	0	1	1	4	3	5
From 20,000 to 49,999	1	1	2	1	2	1	2	3
From 50,000 to 99,999	0	0	0	0	0	1	1	1
From 100,000 to 199,999	0	0	0	1	0	0	0	0
From 200,000 to 499,999	0	0	0	0	1	1	0	0
From 500,000 to 999,999	0	0	0	0	0	0	1	1
1 million and above	0	0	0	0	0	0	0	0
Population of agglomerations	26,038	25,520	64,399	160,943	330,422	550,249	745,646	976,955
From 10,000 to 19,999	0	0	0	16,067	17,260	53,220	42,574	66,598
From 20,000 to 49,999	26,038	25,520	64,399	42,839	76,818	36,766	52,821	70,117
From 50,000 to 99,999	0	0	0	0	0	52,696	71,463	90,229
From 100,000 to 199,999	0	0	0	102,037	0	0	0	0
From 200,000 to 499,999	0	0	0	0	236,344	407,567	0	0
From 500,000 to 999,999	0	0	0	0	0	0	578,788	750,011
1 million and above	0	0	0	0	0	0	0	0
<i>Geopolis</i> urbanization rate (%)	10.7	8.6	14.8	25.7	36.1	43.7	44.9	47.4
Primacy index			1.26	2.38	5.51	7.73	8.10	8.31
Predicted metropolitan population	25,999	25,577	54,385	114,731	206,197	312,462	400,272	498,872
Observed metropolitan population, of which	26,038	25,520	64,399	144,876	279,233	444,333	608,983	774,810
Banjul	26,038	25,520	35,850	42,839	42,889	36,766	30,195	24,799
Kanifing	0	0	28,549	102,037	236,344	407,567	578,788	750,011
National metropolitanization rate (%)	10.7	8.6	14.8	23.1	30.5	35.3	36.7	37.6
Urban metropolitanization rate (%)	100.0	100.0	100.0	90.0	84.5	80.8	81.7	79.3
Population of secondary agglomerations	0	0	0	16,067	51,189	105,916	136,663	202,145
Secondary urbanization rate (%)	0.0	0.0	0.0	10.0	15.5	19.2	18.3	20.7

## Main Statistical Indicators for Guinea

	1950	1960	1970	1980	1990	2000	2010	2020
Total Population	2,680,000	2,722,941	4,090,107	4,580,217	6,457,776	7,712,403	8,967,032	10,221,657
Number of <i>Geopolis</i> agglomerations	5	5	13	19	22	27	26	26
From 10,000 to 19,999	3	3	8	8	7	12	9	8
From 20,000 to 49,999	2	1	4	9	9	5	7	6
From 50,000 to 99,999	0	1	0	1	5	4	4	5
From 100,000 to 199,999	0	0	0	0	0	5	5	3
From 200,000 to 499,999	0	0	1	0	0	0	0	3
From 500,000 to 999,999	0	0	0	1	1	0	0	0
1 million and above	0	0	0	0	0	1	1	1
Population of agglomerations	97,000	168,358	610,770	1,113,426	1,699,445	2,392,055	3,023,495	3,675,286
From 10,000 to 19,999	33,900	42,369	118,332	111,591	103,916	167,307	119,311	105,178
From 20,000 to 49,999	63,100	28,242	132,919	275,481	319,740	171,735	238,652	184,557
From 50,000 to 99,999	0	97,747	0	57,640	353,289	240,913	312,583	370,174
From 100,000 to 199,999	0	0	0	0	0	562,891	777,031	462,282
From 200,000 to 499,999	0	0	359,519	0	0	0	0	650,467
From 500,000 to 999,999	0	0	0	668,714	922,500	0	0	0
1 million and above	0	0	0	0	0	1,249,209	1,575,918	1,902,628
Primacy index	2	3	7	12	11	10	9	8
<i>Geopolis</i> urbanization rate (%)	3.6	6.2	14.9	24.3	26.3	31.0	33.7	36.0
Predicted metropolitan population	75,938	119,021	340,198	554,971	783,324	1,034,999	1,252,727	1,468,769
Observed metropolitan population, of which	38,500	97,747	359,519	668,714	922,500	1,249,209	1,575,918	1,902,628
Conakry	38,500	97,747	359,519	668,714	922,500	1,249,209	1,575,918	1,902,628
National metropolitanization rate (%)	1.4	3.6	8.8	14.6	14.3	16.2	17.6	18.6
Urban metropolitanization rate (%)	39.7	58.1	58.9	60.1	54.3	52.2	52.1	51.8
Population of secondary agglomerations	58,500	70,611	251,251	444,712	776,945	1,142,846	1,447,577	1,772,658
Secondary urbanization rate (%)	60.3	41.9	41.1	39.9	45.7	47.8	47.9	48.2

## Main Statistical Indicators for Guinea Bissau

	1950	1960	1970	1980	1990	2000	2010	2020
Total Population	508,970	525,437	487,448	783,922	954,492	1,191,589	1,497,436	1,803,288
Number of <i>Geopolis</i> agglomerations	1	1	1	2	3	3	8	10
From 10,000 to 19,999	0	0	0	1	2	2	6	8
From 20,000 to 49,999	1	1	0	0	0	0	1	1
From 50,000 to 99,999	0	0	0	0	0	0	0	0
From 100,000 to 199,999	0	0	1	1	1	0	0	0
From 200,000 to 499,999	0	0	0	0	0	1	1	0
From 500,000 to 999,999	0	0	0	0	0	0	0	1
1 million and above	0	0	0	0	0	0	0	0
Population of agglomerations	46,163	49,844	118,572	129,396	210,809	329,992	557,964	760,444
From 10,000 to 19,999	0	0	0	13,760	27,977	31,174	76,715	115,923
From 20,000 to 49,999	46,163	49,844	0	0	0	0	24,421	29,684
From 50,000 to 99,999	0	0	0	0	0	0	0	0
From 100,000 to 199,999	0	0	118,572	115,636	182,832	0	0	0
From 200,000 to 499,999	0	0	0	0	0	298,818	456,828	0
From 500,000 to 999,999	0	0	0	0	0	0	0	614,837
1 million and above	0	0	0	0	0	0	0	0
<i>Geopolis</i> urbanization rate (%)	9.1	9.5	24.3	16.5	22.1	27.7	37.3	42.2
Primacy index				8.40	10.93	15.60	18.71	20.71
Predicted metropolitan population	41,461	44,136	89,441	96,041	142,959	205,978	316,028	406,735
Observed metropolitan population, of which	46,163	49,844	118,572	115,636	182,832	298,818	456,828	614,837
Bissau	46,163	49,844	118,572	115,636	182,832	298,818	456,828	614,837
National metropolitanization rate (%)	9.1	9.5	24.3	14.8	19.2	25.1	30.5	34.1
Urban metropolitanization rate (%)	100.0	100.0	100.0	89.4	86.7	90.6	81.9	80.9
Population of secondary agglomerations	0	0	0	13,760	27,977	31,174	101,136	145,607
Secondary urbanization rate (%)	0.0	0.0	0.0	10.6	13.3	9.4	18.1	19.1

## Main Statistical Indicators for Liberia

	1950	1960	1970	1980	1990	2000	2010	2020
Total Population	820,000	912,200	1,280,208	1,811,995	2,351,858	2,821,306	3,290,757	3,760,207
Number of <i>Geopolis</i> agglomerations	1	1	4	12	14	14	18	17
From 10,000 to 19,999	0	0	3	9	11	9	12	9
From 20,000 to 49,999	1	0	0	2	2	4	3	4
From 50,000 to 99,999	0	1	0	0	0	0	2	3
From 100,000 to 199,999	0	0	1	0	0	0	0	0
From 200,000 to 499,999	0	0	0	1	0	0	0	0
From 500,000 to 999,999	0	0	0	0	1	1	0	0
1 million and above	0	0	0	0	0	0	1	1
Population of agglomerations	22,900	64,861	190,319	484,085	762,881	1,029,871	1,640,574	2,013,556
From 10,000 to 19,999	0	0	40,233	114,970	167,743	125,500	174,307	140,278
From 20,000 to 49,999	22,900	0	0	53,804	66,006	130,156	93,278	99,545
From 50,000 to 99,999	0	64,861	0	0	0	0	111,902	188,064
From 100,000 to 199,999	0	0	150,086	0	0	0	0	0
From 200,000 to 499,999	0	0	0	315,311	0	0	0	0
From 500,000 to 999,999	0	0	0	0	529,132	774,215	0	0
1 million and above	0	0	0	0	0	0	1,261,087	1,585,669
<i>Geopolis</i> urbanization rate (%)	2.8	7.1	14.9	26.7	32.4	36.5	49.9	53.5
Primacy index			8	10	13	17	22	23
Predicted metropolitan population	23,416	54,703	131,528	281,483	407,797	520,786	761,137	899,439
Observed metropolitan population, of which	22,900	64,861	150,086	315,311	529,132	774,215	1,261,087	1,585,669
Monrovia	22,900	64,861	150,086	315,311	529,132	774,215	1,261,087	1,585,669
National metropolitanization rate (%)	2.8	7.1	11.7	17.4	22.5	27.4	38.3	42.2
Urban metropolitanization rate (%)	100.0	100.0	78.9	65.1	69.4	75.2	76.9	78.7
Population of secondary agglomerations	0	0	40,233	168,774	233,749	255,656	379,487	427,887
Secondary urbanization rate (%)	0.0	0.0	21.1	34.9	30.6	24.8	23.1	21.3

## Main Statistical Indicators for Mali

	1950	1960	1970	1980	1990	2000	2010	2020
Total Population	3,448,880	4,254,903	5,454,988	6,830,978	8,215,894	10,263,211	13,201,463	16,139,716
Number of <i>Geopolis</i> agglomerations	4	6	13	19	24	30	45	61
From 10,000 to 19,999	2	3	8	9	10	13	28	40
From 20,000 to 49,999	1	2	4	6	7	9	8	9
From 50,000 to 99,999	1	1	0	3	6	5	6	6
From 100,000 to 199,999	0	0	0	0	0	2	2	5
From 200,000 to 499,999	0	0	1	1	0	0	0	0
From 500,000 to 999,999	0	0	0	0	1	0	0	0
1 million and above	0	0	0	0	0	1	1	1
Population of agglomerations	106,717	187,020	479,069	980,889	1,490,995	2,148,391	2,943,210	3,786,502
From 10,000 to 19,999	29,811	43,971	112,859	129,819	133,568	166,077	372,189	530,793
From 20,000 to 49,999	20,381	44,000	135,438	191,909	195,831	264,717	284,557	279,441
From 50,000 to 99,999	56,525	99,049	0	180,536	407,129	338,882	459,858	371,265
From 100,000 to 199,999	0	0	0	0	0	225,193	276,025	657,366
From 200,000 to 499,999	0	0	230,772	478,625	0	0	0	0
From 500,000 to 999,999	0	0	0	0	754,467	0	0	0
1 million and above	0	0	0	0	0	1,153,522	1,550,581	1,947,637
Primacy index	2.77	4.30	6.14	6.74	8.24	9.50	9.70	9.82
<i>Geopolis</i> urbanization rate (%)	3.1	4.4	8.8	14.4	18.1	20.9	22.3	23.5
Predicted metropolitan population	82,083	129,667	279,104	500,509	704,084	948,230	1,225,549	1,504,892
Observed metropolitan population, of which	56,525	99,049	230,772	478,625	754,467	1,153,522	1,550,581	1,947,637
Bamako	56,525	99,049	230,772	478,625	754,467	1,153,522	1,550,581	1,947,637
National metropolization rate (%)	1.6	2.3	4.2	7.0	9.2	11.2	11.7	12.1
Urban metropolization rate (%)	53.0	53.0	48.2	48.8	50.6	53.7	52.7	51.4
Population of secondary agglomerations	50,192	87,971	248,297	502,264	736,528	994,869	1,392,629	1,838,865
Secondary urbanization rate (%)	47.0	47.0	51.8	51.2	49.4	46.3	47.3	48.6

## Main Statistical Indicators for Mauritania

	1950	1960	1970	1980	1990	2000	2010	2020
Total Population	471,120	787,270	1,119,919	1,522,175	1,970,371	2,548,157	3,125,943	3,703,731
Number of <i>Geopolis</i> agglomerations	0	0	4	6	13	10	11	11
From 10,000 to 19,999	0	0	3	3	7	4	5	5
From 20,000 to 49,999	0	0	1	2	4	4	4	4
From 50,000 to 99,999	0	0	0	0	1	1	1	1
From 100,000 to 199,999	0	0	0	1	0	0	0	0
From 200,000 to 499,999	0	0	0	0	1	0	0	0
From 500,000 to 999,999	0	0	0	0	0	1	1	1
1 million and above	0	0	0	0	0	0	0	0
Population of agglomerations	0	0	76,430	291,996	671,860	799,024	972,530	1,144,932
From 10,000 to 19,999	0	0	39,296	55,960	86,308	51,085	62,204	72,221
From 20,000 to 49,999	0	0	37,134	51,897	107,387	117,407	127,427	137,446
From 50,000 to 99,999	0	0	0	0	61,209	72,337	83,465	94,593
From 100,000 to 199,999	0	0	0	184,139	0	0	0	0
From 200,000 to 499,999	0	0	0	0	416,956	0	0	0
From 500,000 to 999,999	0	0	0	0	0	558,195	699,434	840,672
1 million and above	0	0	0	0	0	0	0	0
<i>Geopolis</i> urbanization rate (%)	0.0	0.0	6.8	19.2	34.1	31.4	31.1	30.9
Primacy index			2.47	6.31	6.81	7.72	8.38	8.89
Predicted metropolitan population	0	0	62,532	186,433	367,683	423,475	497,030	567,736
Observed metropolitan population, of which	0	0	37,134	184,139	416,956	558,195	699,434	840,672
Nouakchott	0	0	37,134	184,139	416,956	558,195	699,434	840,672
National metropolitanization rate (%)	0.0	0.0	3.3	12.1	21.2	21.9	22.4	22.7
Urban metropolitanization rate (%)			48.6	63.1	62.1	69.9	71.9	73.4
Population of secondary agglomerations	0	0	39,296	107,857	254,904	240,829	273,096	304,260
Secondary urbanization rate (%)			51.4	36.9	37.9	30.1	28.1	26.6

## Main Statistical Indicators for Niger

	1950	1960	1970	1980	1990	2000	2010	2020
Total Population	2,273,320	3,033,376	3,860,451	5,587,543	7,707,050	10,464,117	13,221,182	15,978,250
Number of <i>Geopolis</i> agglomerations	3	4	6	10	23	35	46	50
From 10,000 to 19,999	3	3	2	5	13	22	25	24
From 20,000 to 49,999	0	1	3	2	5	7	13	18
From 50,000 to 99,999	0	0	0	2	2	3	5	2
From 100,000 to 199,999	0	0	1	0	2	2	1	3
From 200,000 to 499,999	0	0	0	1	1	0	1	2
From 500,000 to 999,999	0	0	0	0	0	1	1	0
1 million and above	0	0	0	0	0	0	0	1
Population of agglomerations	39,761	84,248	215,538	519,163	1,077,180	1,681,907	2,327,987	2,920,062
From 10,000 to 19,999	39,761	50,875	23,572	69,892	166,025	305,170	347,029	356,918
From 20,000 to 49,999	0	33,373	91,146	61,083	138,081	211,200	351,772	553,605
From 50,000 to 99,999	0	0	0	127,961	105,734	208,462	382,375	131,368
From 100,000 to 199,999	0	0	100,820	0	241,006	309,734	172,981	341,624
From 200,000 to 499,999	0	0	0	260,227	426,334	0	205,482	447,191
From 500,000 to 999,999	0	0	0	0	0	647,341	868,348	0
1 million and above	0	0	0	0	0	0	0	1,089,356
<i>Geopolis</i> urbanization rate (%)	1.7	2.8	5.6	9.3	14.0	16.1	17.6	18.3
Primacy index	1.06	1.70	2.67	3.69	3.37	3.90	4.23	4.45
Predicted metropolitan population	36,711	67,697	145,567	297,998	540,202	776,730	1,012,349	1,217,687
Observed metropolitan population, of which	13,830	33,373	100,820	260,227	426,334	647,341	868,348	1,089,356
Niamey	13,830	33,373	100,820	260,227	426,334	647,341	868,348	1,089,356
National metropolization rate (%)	0.6	1.1	2.6	4.7	5.5	6.2	6.6	6.8
Urban metropolization rate (%)	34.8	39.6	46.8	50.1	39.6	38.5	37.3	37.3
Population of secondary agglomerations	25,931	50,875	114,718	258,936	650,846	1,034,566	1,459,639	1,830,706
Secondary urbanization rate (%)	65.2	60.4	53.2	49.9	60.4	61.5	62.7	62.7

## Main Statistical Indicators for Nigeria

	1950	1960	1970	1980	1990	2000	2010	2020
Total Population	33,900,000	42,300,000	53,700,000	71,065,000	94,454,000	124,773,000	158,313,000	193,099,000
Number of <i>Geopolis</i> agglomerations	76	136	196	256	340	441	509	577
From 10,000 to 19,999	37	62	89	118	157	199	219	247
From 20,000 to 49,999	26	43	65	78	101	134	161	172
From 50,000 to 99,999	10	18	20	33	39	51	62	72
From 100,000 to 199,999	1	10	16	13	21	26	34	43
From 200,000 to 499,999	1	1	3	11	17	22	18	25
From 500,000 to 999,999	1	2	2	0	2	5	9	10
1 million and above	0	0	1	3	3	4	6	8
Population of agglomerations	2,970,360	6,491,204	11,012,228	16,708,487	26,267,734	37,403,850	48,478,970	59,707,794
From 10,000 to 19,999	521,865	886,446	1,234,237	1,657,142	2,170,738	2,717,104	3,097,824	3,584,929
From 20,000 to 49,999	843,183	1,248,813	2,068,932	2,453,911	3,098,361	4,059,660	5,039,631	5,401,804
From 50,000 to 99,999	678,319	1,230,464	1,433,421	2,337,945	2,588,921	3,548,257	4,518,779	4,941,329
From 100,000 to 199,999	115,112	1,278,395	2,347,633	1,988,687	2,769,702	3,334,425	4,952,000	5,916,302
From 200,000 to 499,999	290,539	458,733	781,979	3,008,204	4,986,220	6,864,205	6,063,766	7,847,088
From 500,000 to 999,999	521,342	1,388,353	1,880,011	0	1,269,936	3,452,009	5,601,580	6,676,624
1 million and above	0	0	1,266,015	5,262,598	9,383,856	13,428,190	19,205,390	25,339,718
<i>Geopolis</i> urbanization rate (%)	8.8	15.3	20.5	23.5	27.8	30.0	30.6	30.9
Primacy index	1.79	1.11	1.27	2.05	3.32	3.23	3.18	3.15
Predicted metropolitan population	1,234,755	2,334,997	3,592,275	5,045,858	7,295,763	9,731,238	12,021,739	14,246,448
Observed metropolitan population, of which	904,275	1,847,086	3,146,026	5,262,598	9,383,856	12,398,272	15,412,689	18,427,105
Lagos	290,539	659,504	1,266,015	2,778,913	6,100,000	8,052,958	10,005,916	11,958,874
Ibadan	521,342	728,849	997,646	1,353,264	1,835,645	2,489,974	3,144,304	3,798,633
Kano	92,394	458,733	882,365	1,130,421	1,448,211	1,855,340	2,262,469	2,669,598
National metropolitanization rate (%)	2.7	4.4	5.9	7.4	9.9	9.9	9.7	9.5
Urban metropolitanization rate (%)	30.4	28.5	28.6	31.5	35.7	33.1	31.8	30.9
Population of secondary agglomerations	2,066,085	4,644,118	7,866,202	11,445,889	16,883,878	25,005,578	33,066,281	41,280,689
Secondary urbanization rate (%)	69.6	71.5	71.4	68.5	64.3	66.9	68.2	69.1

## Main Statistical Indicators for Senegal

	1950	1960	1970	1980	1990	2000	2010	2020
Total Population	1,977,167	2,510,195	3,717,302	5,589,846	7,250,429	9,334,933	12,134,081	14,933,227
Number of <i>Geopolis</i> agglomerations	4	9	14	24	34	43	53	60
From 10,000 to 19,999	0	3	5	11	19	23	25	26
From 20,000 to 49,999	3	3	5	6	6	10	16	21
From 50,000 to 99,999	0	2	3	4	3	3	4	5
From 100,000 to 199,999	0	0	0	2	5	4	5	3
From 200,000 to 499,999	1	1	0	0	0	2	1	3
From 500,000 to 999,999	0	0	1	0	0	0	1	1
1 million and above	0	0	0	1	1	1	1	1
Population of agglomerations	357,544	654,264	1,193,842	2,167,331	3,184,364	4,276,139	5,416,072	6,555,978
From 10,000 to 19,999	0	41,463	60,006	139,530	262,951	327,620	339,927	361,008
From 20,000 to 49,999	104,238	95,290	160,894	184,506	190,435	307,821	450,516	627,722
From 50,000 to 99,999	0	113,954	242,176	322,433	219,820	222,127	283,293	391,326
From 100,000 to 199,999	0	0	0	255,478	743,627	594,160	802,152	474,876
From 200,000 to 499,999	253,306	403,557	0	0	0	567,094	262,948	747,227
From 500,000 to 999,999	0	0	730,766	0	0	0	530,132	716,930
1 million and above	0	0	0	1,265,384	1,767,531	2,257,317	2,747,104	3,236,889
<i>Geopolis</i> urbanization rate (%)	18.1	26.1	32.1	38.8	43.9	45.8	44.6	43.9
Primacy index	6.79	6.93	8.11	9.38	9.58	6.57	5.18	4.51
Predicted metropolitan population	219,890	359,816	587,426	955,037	1,306,787	1,661,684	2,014,624	2,353,970
Observed metropolitan population, of which	253,306	403,557	730,766	1,265,384	1,767,531	2,257,317	2,747,104	3,236,889
Dakar	253,306	403,557	730,766	1,265,384	1,767,531	2,257,317	2,747,104	3,236,889
National metropolitanization rate (%)	12.8	16.1	19.7	22.6	24.4	24.2	22.6	21.7
Urban metropolitanization rate (%)	70.8	61.7	61.2	58.4	55.5	52.8	50.7	49.4
Population of secondary agglomerations	104,238	250,707	463,076	901,947	1,416,833	2,018,822	2,668,968	3,319,089
Secondary urbanization rate (%)	29.2	38.3	38.8	41.6	44.5	47.2	49.3	50.6

## Main Statistical Indicators for Sierra Leone

	1950	1960	1970	1980	1990	2000	2010	2020
Total Population	1,907,968	2,117,027	2,520,947	3,133,574	3,849,233	4,612,424	5,498,681	6,384,939
Number of <i>Geopolis</i> agglomerations	2	3	5	8	9	12	14	18
From 10,000 to 19,999	1	1	1	4	5	7	7	11
From 20,000 to 49,999	0	1	3	2	0	1	3	3
From 50,000 to 99,999	1	0	0	1	3	2	2	1
From 100,000 to 199,999	0	1	0	0	0	1	1	1
From 200,000 to 499,999	0	0	1	1	0	0	0	1
From 500,000 to 999,999	0	0	0	0	1	1	1	0
1 million and above	0	0	0	0	0	0	0	1
Population of agglomerations	90,761	147,858	316,444	585,786	832,411	1,138,180	1,437,233	1,763,144
From 10,000 to 19,999	17,333	11,215	14,881	50,664	72,658	103,078	99,737	158,855
From 20,000 to 49,999	0	24,106	92,774	86,688	0	21,093	69,230	81,765
From 50,000 to 99,999	73,428	0	0	79,392	218,863	162,359	184,200	92,246
From 100,000 to 199,999	0	112,537	0	0	0	134,606	190,869	113,795
From 200,000 to 499,999	0	0	208,789	369,042	0	0	0	247,132
From 500,000 to 999,999	0	0	0	0	540,890	717,044	893,197	0
1 million and above	0	0	0	0	0	0	0	1,069,351
<i>Geopolis</i> urbanization rate (%)	4.8	7.0	12.6	18.7	21.6	24.7	26.1	27.6
Primacy index	4	5	5	5	6	5	5	4
Predicted metropolitan population	71,933	107,069	199,060	328,813	437,841	565,006	683,323	807,172
Observed metropolitan population, of which	73,428	112,537	208,789	369,042	540,890	717,044	893,197	1,069,351
Freetown	73,428	112,537	208,789	369,042	540,890	717,044	893,197	1,069,351
National metropolitanization rate (%)	3.8	5.3	8.3	11.8	14.1	15.5	16.2	16.7
Urban metropolitanization rate (%)	80.9	76.1	66.0	63.0	65.0	63.0	62.1	60.7
Population of secondary agglomerations	17,333	35,321	107,655	216,744	291,521	421,136	544,036	693,793
Secondary urbanization rate (%)	19.1	23.9	34.0	37.0	35.0	37.0	37.9	39.3

## Main Statistical Indicators for Togo

	1950	1960	1970	1980	1990	2000	2010	2020
Total Population	1,139,888	1,480,102	1,953,800	2,621,315	3,440,410	4,531,350	5,892,650	7,253,951
Number of <i>Geopolis</i> agglomerations	2	5	18	20	28	39	57	71
From 10,000 to 19,999	1	4	15	15	19	24	36	43
From 20,000 to 49,999	1	0	2	4	7	10	13	20
From 50,000 to 99,999	0	1	0	0	1	4	5	3
From 100,000 to 199,999	0	0	0	0	0	0	2	4
From 200,000 to 499,999	0	0	1	1	0	0	0	0
From 500,000 to 999,999	0	0	0	0	1	0	0	0
1 million and above	0	0	0	0	0	1	1	1
Population of agglomerations	49,096	130,034	470,646	748,232	1,213,464	1,945,898	2,782,244	3,614,415
From 10,000 to 19,999	10,192	49,847	186,331	204,683	270,259	338,047	481,926	574,233
From 20,000 to 49,999	38,904	0	56,136	127,277	226,995	279,401	322,267	534,670
From 50,000 to 99,999	0	80,187	0	0	64,033	298,450	341,260	212,706
From 100,000 to 199,999	0	0	0	0	0	0	228,968	507,160
From 200,000 to 499,999	0	0	228,179	416,272	0	0	0	0
From 500,000 to 999,999	0	0	0	0	652,177	0	0	0
1 million and above	0	0	0	0	0	1,030,000	1,407,823	1,785,646
<i>Geopolis</i> urbanization rate (%)	4.3	8.8	24.1	28.5	35.3	42.9	47.2	49.8
Primacy index		5.02	7.05	8.97	10.19	11.70	12.03	11.75
Predicted metropolitan population	43,596	96,427	275,098	401,403	595,283	874,730	1,170,640	1,448,913
Observed metropolitan population, of which	38,904	80,187	228,179	416,272	652,177	1,030,000	1,407,823	1,785,646
Lome	38,904	80,187	228,179	416,272	652,177	1,030,000	1,407,823	1,785,646
National metropolization rate (%)	3.4	5.4	11.7	15.9	19.0	22.7	23.9	24.6
Urban metropolization rate (%)	79.2	61.7	48.5	55.6	53.7	52.9	50.6	49.4
Population of secondary agglomerations	10,192	49,847	242,467	331,960	561,287	915,898	1,374,421	1,828,769
Secondary urbanization rate (%)	20.8	38.3	51.5	44.4	46.3	47.1	49.4	50.6